











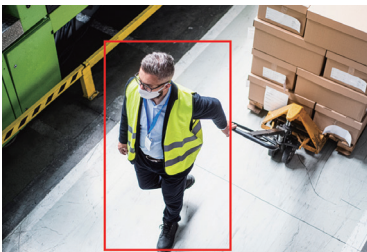


iCam-D48

4K AI IR Weather-Proof Dome Network Camera

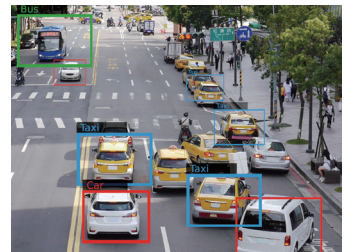
-  40 Meters IR
-  IP66 Weather Proof
-  Ultra Low Light
-  4K Full HD Imaging
-  Person Detection
-  Vehicle Detection
-  Mobile APP
-  HDR
-  SD Card
-  IK10 Vandal Proof

iCam-D48 is a water-proof and vandal-proof design camera with 8M/4K full HD resolution and stylish design. The perfect combination of Intelligent infrared-light and star-light function greatly improve the visibility effect in the dark and low-light environments. The 3X motorized lens can clearly auto adjust the images within 40 meters range. The IP66 and IK10 design ensures you the flexible installation in the outdoor and harsh indoor environment. The iCam-D48 supports standard H.264/H.265 and also the onvif protocol. The edge storage SD card slot can support up to 128GB edge records. The device has built-in person detection and vehicle detection functions for you to easily get event alarm from the IntelliSight mobile APP.



Person Detection


Vehicle Detection



iCam-D48

4K AI IR Weather-Proof Dome Network Camera

Specifications

		
Model	iCam-D48	
Camera		
Image Sensor	1/1.8" 8 Megapixel Progressive Scan CMOS	
Max. Resolution	3840(H)x2160(V)	
Shutter Time	1/12s-1/10000s	
Minimum Illumination	Color: 0.1Lux @(F1.2, AGC ON)	
	B/W: 0Lux @(IR LED ON)	
Day/Night	IR-CUT with Auto Switch/Scheduled	
WDR	HDR	
BLC	Support	
Lens		
Mount Type	Motorized Varifocal Lens, Support Remote Focus and Zoom	
Focal Length	3.6mm-10mm Zoom Lens with DC-IRIS	
Aperture	F1.5 (W) ~ F2.8 (T)	
FOV	99~42° (H)	
Iris Type	DC-IRIS	
Illuminator		
IR Range	Up to 40m	
Wave-length	850 nm	
Audio		
Audio Compression	G.711, G.726, AAC-LC	
Audio Type	Mono	
Audio Capability	Environmental Noise Filter, Echo Cancellation, Two-way Audio	
Video		
Video Compression	H.264, H.265	
Video Bit Rate	512kbps-16mbps	
Resolution	Main Stream (2880*1620, 2560*1440, 1920*1080, 1280*720)	
	Sub Stream (1920*1080, 1280*720, 704*576, 640*480)	
	Third Stream (1280*720, 704*576, 640*480)	
Region of Interest (ROI)	4Fixed Regions for Each Stream; Target Cropping of Third Stream	
Image		
Image Setting	Saturation, Brightness, Contrast, sharpness, Auto white balance	
Image Enhancement	Lens Distortion Correction, Defog, 2D/3DDNR	
S/N Ratio	39dB	
Dynamic Range	>74dB	
Others	OSD, Image Flip, Picture Overlay	
Smart Events		
Video Analytics	Defocus Detection, Scene Change Detection, Occlusion Detection	
Smart Events	Intrusion Detection, Line Crossing Detection, Region Entrance Detection, Region Exiting Detection, Loitering Detection	
Deep Learning Events	Vehicle Detection, Face&Pedestrian Detection, Face Match(-P), ANPR (-C)	
Network		
Protocols	TCP/IP, ICMP, HTTP, HTTPS, FTP, DHCP, DNS, DDNS, RTP, RTSP, RTCP, PPPoE, NTP, UPnP, SMTP, SNMP, IGMP, IPv4, IPv6	
Compatibility	ONVIF, GB28181, CGI API	
Management	IntelliSight Cloud, IntelliSight Mobile	
Interface		
Ethernet	1 RJ45(10M/100M/1000M)	
Storage	Built-in MicroSD/SDHC/SDXC Slot, up to 128 GB	
Alarm	1 input, 1 output	
Audio	1 Built-in Mic, External 1 Line in, External 1 Line out	
Key	Reset Button	
General		
Power Supply	DC12V 1A/POE (IEEE802.3af)	
Power Consumption	<12W	
Operating Conditions	Temperature	-30°C to 60°C (-22°F to 140°F)
	Humidity	10% to 90% (no condensation)
Weather Proof	IP66	
Certifications	CE, FCC, ROHS	
Weight	3KGS	
Dimensions	ø158*110mm	

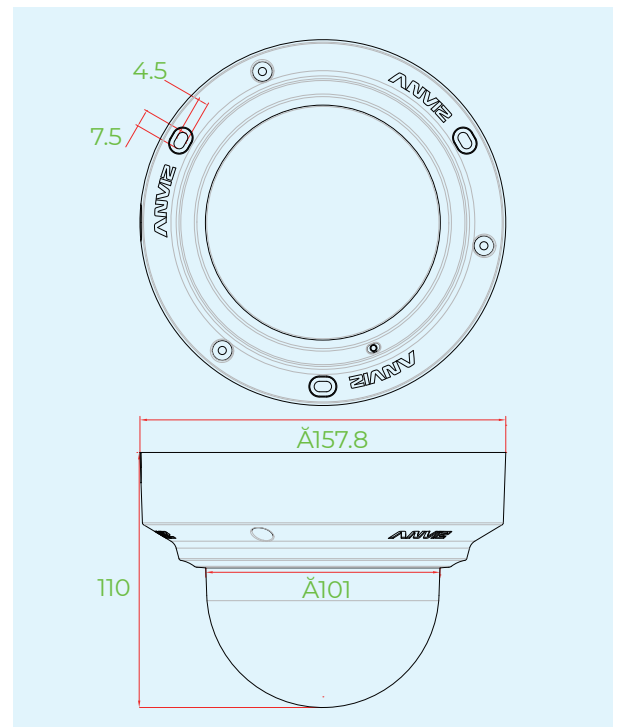
iCam-D48

4K AI IR Weather-Proof Dome Network Camera

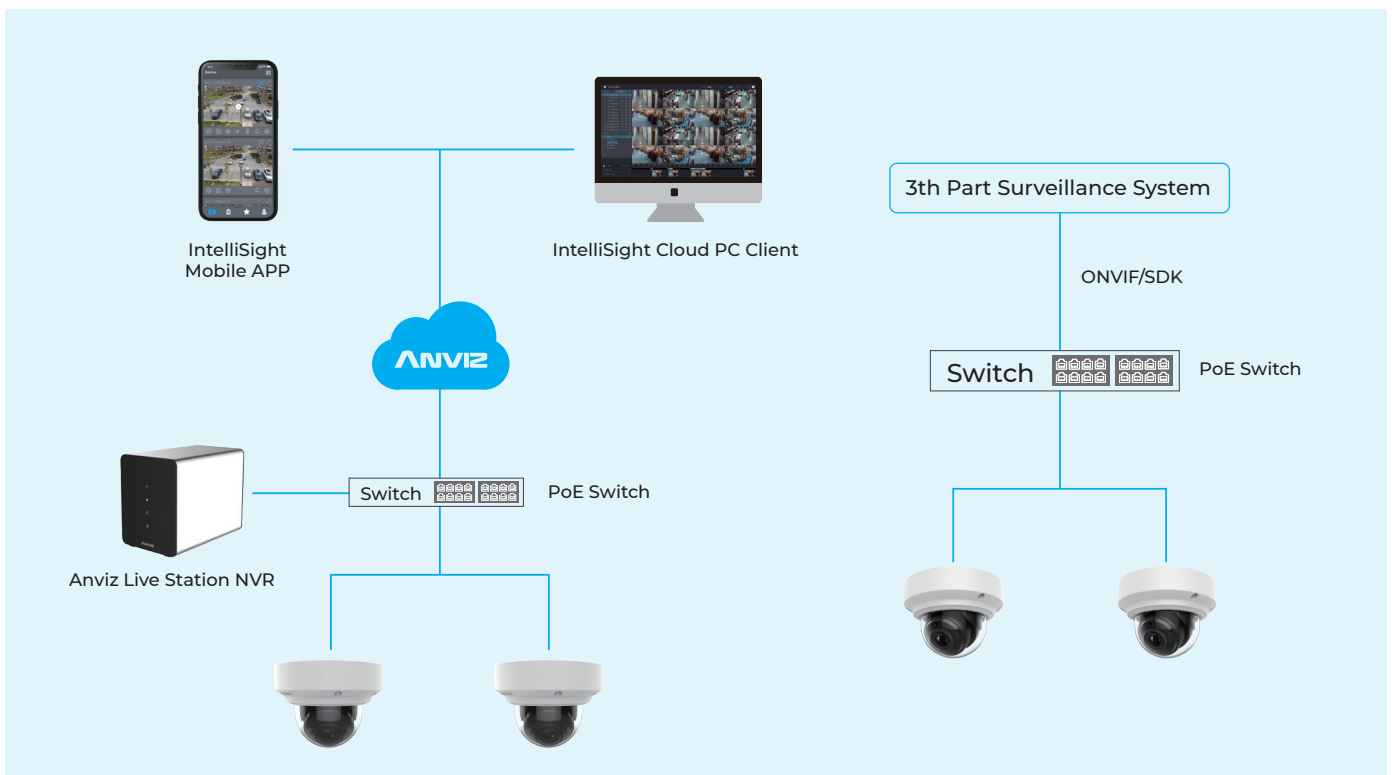
■ Features

- 3x Optical Zoom Lens**
A wide-angle, 3x optical zoom lens delivers detailed, panoramic image.
- Crisp 4K**
Capturing 4K ultra HD video that delivers detailed images of vehicle, person, faces, and more.
- Edge AI Application**
The powerful edge AI engine helps you to get a clear vehicle and person detection events from your mobile phone and no need any extra server investment.
- Up to 14 Days Edge Storage**
A Built-in up to 128GB micro-sd card slot plus Anviz smart stream technology ensures an up to 14 days full time edge storage and no need to rely on any local storage.
- Indoor and Outdoor**
Weather-resistant IP66-rated casing allows this versatile camera to be deployed anywhere.
- Crisp Night Vision**
The infrared LEDs with an automatic IR cut filter and the enhanced low-light design delivers pristine image clarity, even in harsh weather or dark areas.
- Remote Access and Management**
The camera could easily link to cloud and the IntelliSight mobile APP let you access to and manage the camera from anywhere using an ios or Android phone.

■ Product Dimensions



■ System Configurations



ANVIZ
POWERING A SMARTER WORLD

Anviz Global Inc.

41656 Christy Street Fremont, Fremont, CA, 94538

Toll-free: 1-855-268-4948 | sales@anziv.com | www.anviz.com

©2021 Anviz Global Inc. Anviz and identifying product names and numbers herein are registered trademarks of Anviz Global Inc. All non-Anviz brands and product names are trademarks or registered trademarks of their respective companies. Product appearance, build status and/or specifications are subject to change without notice.