

FACEPASS 7 ^{IRT}

Touchless Face Recognition and Infrared Thermal Temperature Detection Terminal



<0.5s



WiFi



Mask Detection



Infrared Thermal
Temperature
Detection



FacePass 7 IRT touchless facial recognition and infrared thermal temperature detection terminal is equipped with AI deep learning architecture and infrared live detection technology, which provide 24/7 accurate identification. With the temperature detection module, FacePass 7 IRT allows a detection distance of 0.3~0.5 m with a deviation of ± 0.3 °C.

FacePass 7 IRT is equipped with a new Linux CPU, implementing a face-capturing of less than 1 second, and a recognition time within 0.5 seconds. The super wide HD camera provides flexible and rapid recognition at multiple angles and distances.

FacePass 7 IRT can communicate through WiFi, 4G or wired network, and can also be managed through its own Web-server and PC based professional software.

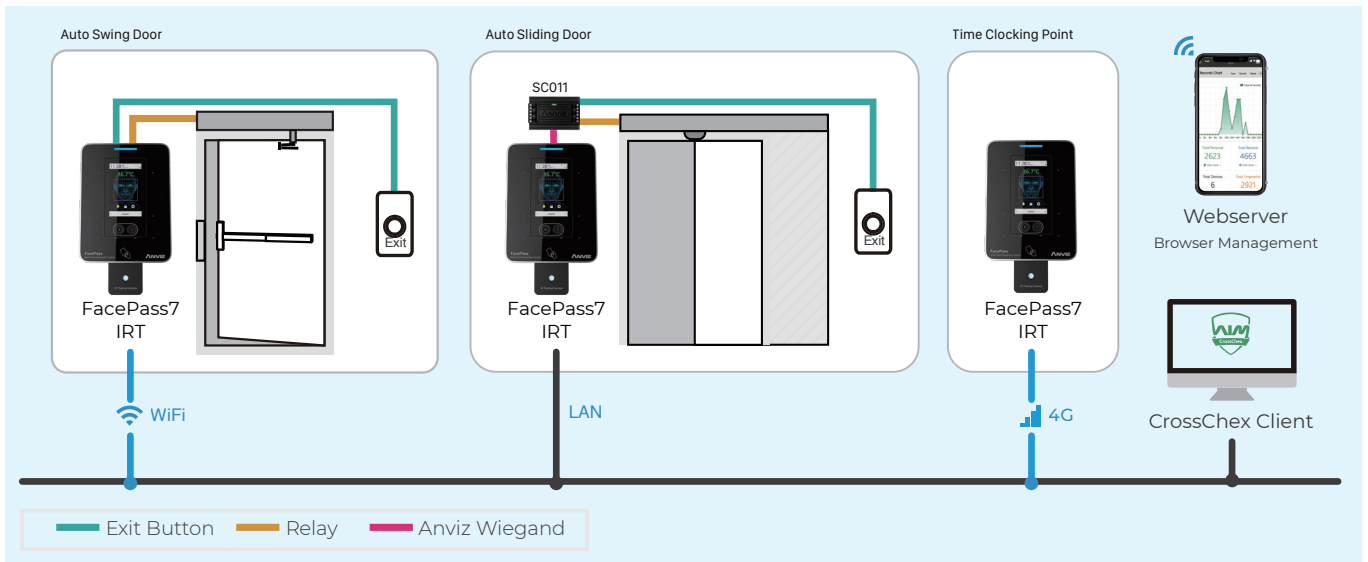
FACEPASS 7 IRT

Touchless Face Recognition and Temperature Screening Terminal

■ Technical Specifications

Capacity	User Capacity	3,000
	Card Capacity	3,000
	Log Capacity	100,000
Interface	Communication	TCP/IP, RS485, USB Host, WiFi, Optional 4G
	I/O	Relay Output, Wiegand Output, Door Sensor, Switch, Doorbell
Feature	Identification	Face, Card, ID+Password
	Verify Speed	<1s
	Image Display	Support
	Self-defined Status	10
	Record Self-check	Support
	Embedded Webservice	Support
	Doorbell	Support
	Multi-languages Support	Support
	Software	Crosschex Standard
Hardware	CPU	Dual-core 1.0GHz
	Infrared Thermal Temperature Detection Module	10-50°C Detection range Detect distance 0.3-0.5 m (11.8 -19.7 inch) Accuracy ±0.3 °C (0.54 °F)
	Face Detection Camera	Dual Camera
	LCD	3.2" HD TFT Touch Screen
	Sound	Support
	Angle Range	Level: ±20°, Vertical: ±20°
	Verify Distance	0.3-0.8 m (11.8-31.5 inch)
	RFID Card	Standard EM, Optional Mifare
	Tamper Alarm	Support
	Operating Temperature	-20 °C (-4 °F)- 60 °C (140 °F)
	Operating Voltage	DC 12V

■ System configurations



* The device is effective on masked faces and can remind people who are not wearing masks to put on their mask. However, face masks will affect the accuracy of the facial recognition and so it should be removed for the scan unless absolutely necessary.



Anviz Global Inc.

41656 Christy Street Fremont, Fremont, CA, 94538

Tel: 1-510-573-6552 | Toll-free: 1-855-268-4948 | sales@anziv.com

www.anziv.com

©2020 Anviz Global Inc. Anviz and identifying product names and numbers herein are registered trademarks of Anviz Global Inc. All non-Anviz brands and product names are trademarks or registered trademarks of their respective companies. Product appearance, build status and/or specifications are subject to change without notice.

Due to the consistent improvement of the product, this specification and appearance are subject to change without notice.