

FaceDeep 5 IRT

AI Based Smart Face Recognition Terminal with Infrared Thermal Temperature Detection



Infrared Thermal
Temperature
Detection



Liveness Face
Detection

AI

AI Deep Learning
Architecture

RFID

125 KHz EM,
13.56 MHz MiFARE,
DESFire



Mask
Detection



- FaceDeep 5 with Infrared Thermal Temperature Detection Camera, specifically designed to rapidly scan users with elevated body temperature
- Temperature screening with thermographic technology (32x32 pixels), more accurate and faster to catch up than others with thermopile technology (single point) only
- New ideal touchless solution for the people to access control on the entrance or record time attendance and simultaneously check temperature and mask-wearing without having to touch a terminal or gate
- Built-in IR and visual cameras integrated with Anviz's unique BioNANO[®] algorithm to produce the best in class live face recognition performance
- Mask not-wearing alert

FaceDeep 5 IRT

AI Based Smart Face Recognition Terminal with Infrared Thermal Temperature Detection

■ Features



Infrared Thermal Temperature Detection

IRT Temperature Detection Camera, specifically designed to rapidly scan users with elevated body temperature



1GHz Linux Based Processor

The new Linux based 1GHz processor ensures the 1:50,000 comparison time less than 0.3 second.



Wi-Fi Flexible Communication

Wi-Fi function can realize stable wireless communication and realize flexible installation of equipment.



Liveness Face Detection

Live face recognition based on infrared and visible light.



Wide Angle Camera

The ultra-wide-angle camera enables fast face recognition.



IPS Full Screen

The colorful IPS screen ensures the best interaction and user experiences and can also provide clear notifications to the users.



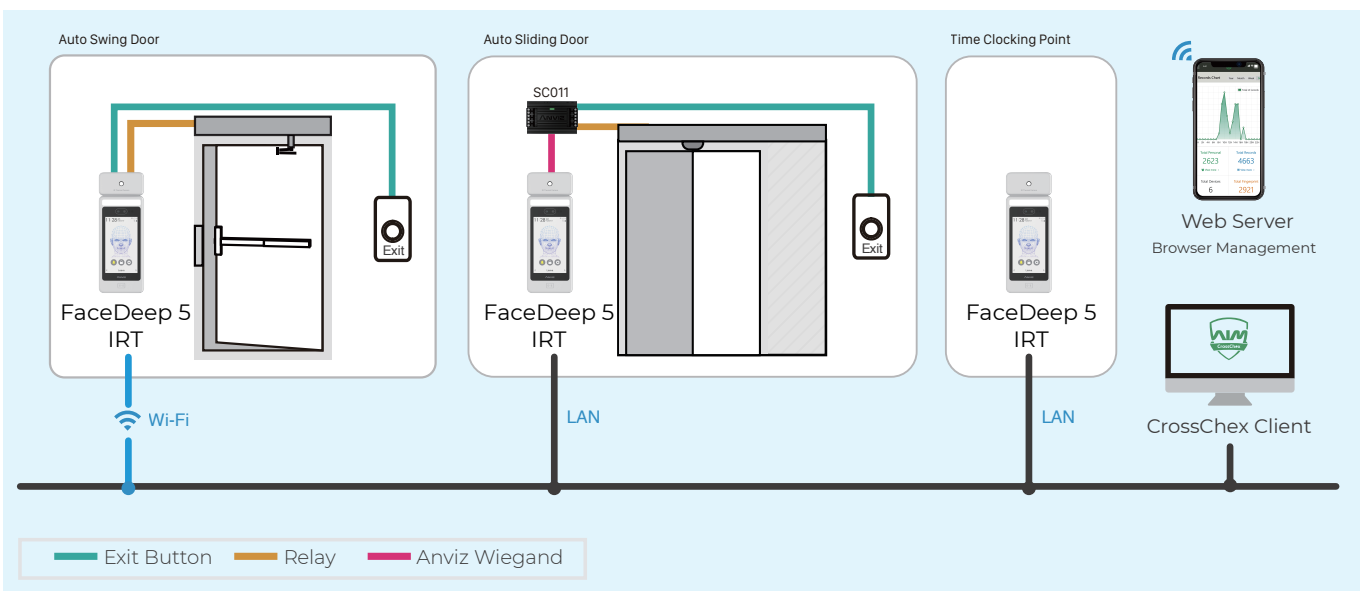
Cloud Application

The web based cloud application let you access to the device by any mobile terminal from anytime and anywhere.

■ Key Specifications

| | |
|---|--|
| Max. Users | 50,000 |
| Max. Cards | 50,000 |
| Max. Logs | 100,000 |
| Communication | TCP/IP, RS232, Wi-Fi |
| Identification Mode | Face, Password, RFID Card |
| Identification Distance | 0.3~2 M(11.81~78.74 ") |
| Identification Speed | <300ms |
| RFID Card | 125 KHz EM, 13.56 MHz: MiFARE, DESFire |
| CPU | Dual Core Linux Based 1GHz CPU With Enhanced AI Computing Power |
| Infrared Thermal Temperature Detection Module | Detect Distance 30cm~100cm (11.81~39.37 ") Accuracy ±0.3 °C (0.54 °F) |
| Temperature Range | -10 °C (14 °F)- 50 °C (122 °F) |
| Humidity | 20% to 90% |
| Power | DC12V 3A |
| IP Ratings | IP65(*For Deep5 Terminal Only, IRT Thermo Module Is Not Included.) |
| Camera Angle Range For Verification | 74.38°(Visual), 67.57°(Infrared) |

■ System Configurations



*Disclaimer: Anviz's products listed herein are not designed for medical devices and not intended for use in the diagnosis of disease or other conditions. When configured correctly, Anviz's products listed herein can identify individuals with skin-surface temperature relative to a preset figure but should not be solely or primarily relied upon to diagnose any disease. Anviz's products must be used in accordance with local laws and regulations.



Anviz Global Inc.

41656 Christy Street Fremont, Fremont, CA, 94538

Tel: 1-510-573-6552 | Toll-free: 1-855-268-4948 | sales@anziv.com | www.anziv.com

©2020 Anviz Global Inc. Anviz and identifying product names and numbers herein are registered trademarks of Anviz Global Inc. All non-Anviz brands and product names are trademarks or registered trademarks of their respective companies. Product appearance, build status and/or specifications are subject to change without notice.